

Annex 4. Traffic Control Management Plan

The purpose of this management plan is to ensure that construction of the Scheme components does not adversely affect road users and other sensitive receptors. This Traffic Control Management Plan (TCMP) therefore identifies the potential impacts and appropriate measures to mitigate them.

Prior to the commencement of construction, the contractor(s) shall use the TCMP as the basis for undertaking a detailed Traffic Assessment (TA) and preparing a detailed TCMP; this will identify specific measures to mitigate any predicted impacts. The contractor's (or contractors') TCMP shall include detailed procedures that demonstrate how the impacts of traffic on communities have been taken into consideration. The contractor(s) shall develop and submit:

- procedures at the start of the construction phase; and
- detailed project-specific procedures that specify how the requirements of their TCMP will be implemented to the satisfaction of the appropriate traffic authorities.

The contractor(s) shall regularly update their TCMP as the construction method is developed and vehicle movement and timing requirements are identified in detail. The contractor(s) shall consult with the relevant government agencies to identify where Project plans can complement existing road development plans at the district and provincial level. The contractor(s) will also consult with the leaders of any communities that will suffer a significant increase in traffic in order to identify alternative routes where possible, or appropriate mitigation measures.

The contractor(s) will:

- identify those responsible for carrying out and managing the procedures;
- reference the procedures and activities the contractor(s) will develop and implement;
- identify work to be undertaken on the roads prior to construction activities to upgrade or stabilize the roads if necessary;
- identify the routes that will be used with the estimated numbers of traffic movements, speeds and times of travel;

- justify where a route has to pass through residential areas and the measures that will be used to ensure the safety of the community and minimize the nuisance impact of traffic movements;
- identify how existing road development plans have been taken into account in the identification of routes and road restoration measures;
- identify the program of road restoration measures that are likely to be required post construction;
- address how the Contractor(s) can reduce the exposure of vehicle drivers, their passengers and other road users from the hazards of road-related accidents;
- identify (and adopt to the maximum extent feasible) all reasonably practicable alternatives to road transportation in order to reduce the number of trucks on the roads; and
- provide details of audits and reviews of the components of the project transport system.

Table 1. Traffic Control Management Plan.

Issue	Mitigating/Monitoring Activity
Access to construction areas	<p>The following environmental aspects shall be considered in finalizing the location of the access road that will be constructed specifically for the Scheme:</p> <ul style="list-style-type: none"> • environmentally sensitive areas; and • pedestrians. <p>Other measures for mitigating the impact of access roads are as follows:</p> <ul style="list-style-type: none"> • Access will be via specified routes, which will be agreed with the relevant authorities. • Existing, upgradeable roads will be used where practicable, to avoid the need to construct new roads. • Access roads to previously inaccessible sensitive areas will be avoided. • If the Contractor requires additional routes, a specific proposal will be submitted to the relevant authorities, if required, for consideration and approval. • Suitable measures will be implemented to avoid damage to public roads and any damage will be repaired to an equal or better standard in a timely manner. • The Contractor will remove all temporary roads or road enlargements, except where local communities or landowners request that a new road be left in place. • Temporary access roads will be kept free from deposits to prevent silt, or other materials from entering drains or watercourses. Access routes to be used by construction traffic will be properly signposted. This shall be sufficient to prevent vehicles from leaving the designated routes and ensure that the appropriate speed limits are enforced particularly through residential areas. • Access and site roads will be maintained in good condition. • Temporary roads will be removed when no longer needed and will

	<p>be reinstated. All damage to existing roads will also be reinstated.</p> <ul style="list-style-type: none"> • Any additional routes will be selected to avoid ecologically sensitive areas, and to minimize erosion. • The Contractor will liaise with the appropriate regulatory authorities to gain approval to use, and regularly inspect, the road infrastructure.
Routing of construction traffic	<ul style="list-style-type: none"> • Relevant authorities will be consulted to agree on specific routes for use by construction traffic to avoid any sensitive residential areas and unsuitable parts of the road network. • Precautions will be taken by the Contractor to avoid damage to the public highways used by vehicles or other items of equipment. Timber mats, tyres or steel plates will be laid as necessary, in particular under tracked equipment. Any road damage will be repaired. • Advance warning will be given of any proposed road diversions and closures. • The Contractor should consider whether to use buses to transport workers to the construction site. • The Contractor will comply with all statutory vehicle limits (width, height, loading, gross weight) and any other statutory requirement.
Temporary traffic control and management	<ul style="list-style-type: none"> • Traffic flows will be timed, wherever practicable, to avoid periods of heavy traffic flow along main roads. • In addition, the Contractor will not commence any work that affects the public highway until all agreed traffic safety and management measures essential for the works are accepted and agreed with the relevant authorities. • In terms of traffic control, vehicles will be prohibited from reversing unattended into the construction site. Vehicles and plant shall enter and exit the site in a forward direction, as far as possible. In addition, the Contractor will ensure that all heavy goods vehicles are equipped with audible reversing alarms. • Clear signs, flagmen and signals will be set up where necessary. Where temporary traffic signals are required, the details and locations of the signs shall be discussed with the relevant authorities. The signs will be fixed safely and securely to ensure that they do not become detached or dislocated, and will be visible and comprehensible by all. The Contractor will also carry out maintenance checks to clean and rescuer signs if necessary. • Appropriate supervision will be provided by the Contractor to control the flow of traffic when machinery needs to cross roads. • Liaison with the police and other authorities will occur prior to the movement of any abnormal loads. In particular, liaison with the relevant Highway Authority will occur prior to transportation on major highways and motorways. • Access to commercial and residential properties shall be maintained and speed limits will be established and enforced over all construction traffic routes. • Where roads used by children to reach schools are used by construction traffic, road safety education will be provided at schools. Vehicle traffic will be prohibited during hours that children are travelling to and from school. • Ambulances and fire services will be consulted regarding road diversions. Road diversions will not increase the response time of these services to local communities. • Access to residential and commercial properties will be maintained. • If road closures are required, diversions will be planned and communicated to the authorities (including emergency services and public transport providers) and affected communities in advance (via

		<p>the pre-construction community meeting) and will be properly signposted. Crossing for pedestrians and animals will be provided to avoid the need for a diversion. No diversion will be permitted that prevents a public transport service from continuing or requires a diversion of more than 1km for vehicles or a diversion of more than 500m for pedestrians or livestock. Notification periods for road closures are as follows:</p> <ul style="list-style-type: none"> ○ two weeks minimum notice on closure of up to 28 days; ○ one month minimum notice on closure of 28 days to three months; ○ threemonths notice for closure over three months or for permanent closure. <ul style="list-style-type: none"> ● Education on traffic safety will be provided by the Community Liaison Officer(s) (CLOs) to communities not normally subjected to major infrastructure construction. ● Fuel use will be minimized during the transportation of construction materials and personnel. A fuel use assessment will be undertaken, in conjunction with safety assessments, at the outset of the construction program. ● A 30km/h speed limit shall be established and enforced over all roads on site.
	Parking facilities	<ul style="list-style-type: none"> ● Signposted, parking facilities shall be provided at accessible locations on the road network. ● The Contractors will ensure that part of the Construction Site is set aside for the parking of emergency service vehicles. The Contractor is expected to make provision for a dedicated parking area on the construction base for the private vehicles of construction personnel.
	Maintaining Highways	<ul style="list-style-type: none"> ● The Contractor is expected to keep highways free from mud and dust and to ensure that no vehicle or other items of equipment leaving the construction base or working width, deposit soil, debris or rock on public highways or public right of ways. ● Measures will be implemented to ensure that the transport of mud and dust from the site onto public highways and roads is limited. Such measures may include: <ul style="list-style-type: none"> ○ paving the access road; and ○ the use of hard-core surfaces on access roads. ● the provision of an easily cleaned hardstanding area within the construction site for vehicles entering, parking and leaving. ● the appointment of site personnel to clean the construction hardstanding area and to remove any mud or debris deposited on the public highways; ● the provision to clean hardstanding areas and to clean any mud or debris deposited by work vehicles on roads or footways in the vicinity of the construction site; ● fully sheeting all works vehicles carrying potentially dusty material or likely to deposit loose materials on the public highway during transit; ● the Contractor shall clean and maintain temporary and permanent roads, and shall remove mud and debris from public roads.
	Road Related Accidents	<p>Hazards to personnel associated with vehicle transportation, both on- and off-road, will present one of the most significant risk exposures of the Project. Accordingly, the Contractor shall be expected to develop and implement management systems and procedures that will provide the highest level of control over these hazards. Accordingly, the Contractor's procedures shall specifically cover arrangements for the following important aspects:</p> <ul style="list-style-type: none"> ● the source of and number of qualified drivers required; ● training and approval requirements for drivers;

	<ul style="list-style-type: none"> • hours of driving and rest periods; • security arrangements for drivers, vehicles and loads; • arrangements for driver communication with control points and vehicle equipment; • language/communication issues; • the source of suitable vehicles (e.g. quality and specification); • the number of vehicles required; • the program for preventative vehicle maintenance; • vehicle routes, route planning and alternative routes; • overall vehicle movements; • procedures for the emergency recovery of vehicles; • an appraisal of the social impact of vehicles in the local community; • procedures for spot checks and audits of the transport system and for reporting problems. • pre-use vehicle inspections shall be completed and recorded on the approved form; • all drivers shall be trained and evaluated in defensive and off-road vehicle operation.
<p>Vehicle Standards and Maintenance</p>	<p>The Contractor shall comply with all other aspects of the Construction Health and Safety Management Plan, which include requirements for vehicle standards and maintenance. The contractor shall also ensure that:</p> <ul style="list-style-type: none"> • All vehicles shall be maintained so that their noise and emissions do not cause nuisance to workers or local people. • New vehicles: vehicles/equipment purchased 'as new' after contract award shall comply with the appropriate emission standards in force on the purchase date. • Older vehicles: vehicles/equipment not purchased 'as new' after contract award shall be maintained so that noise and emissions levels are no greater than when the vehicle/ equipment was new. <p>The contractor shall produce method statements, as part of their TCMP, to cover routine maintenance and to minimize equipment emissions. Routine maintenance shall be to a high standard to ensure that vehicles are safe and that emissions and noise are minimized. Method statements shall require regular maintenance of diesel engines to ensure that emissions are minimized, for example, by cleaning fuel injectors.</p>

Annex 5. Risk Assessments

Assessments will take into account environmental as well as health and safety hazards and will include area and task-based assessments. They will be performed by trained staff and each hazard will be considered in the context of its effect upon the activities regarding:

- materials/substances;
- equipment;
- the workplace;
- people;
- procedures; and
- the environment.

This risk assessment approach will consider the hazard, harm, potential severity, probability of occurrence, risk rating, control measures and residual risk. These assessments will also detail action dates and be reviewed on a regular basis. Table 2 presents the Accidents Risk Assessment Management Plan.

Table 2. Accidents Risk Assessment Management Plan.

Risk		Managing the Risk		Assessing the Risk		What is the overall risk
Hazard	Receptor	Pathway		Probability of Exposure	Consequence	
Fuel Handling						
Spillage of diesel	• Soil	Storage tank leak or transfer spill	<ul style="list-style-type: none"> • Training of staff; • Impervious surfaces; • Routine operator checks; and • Clean up response team. 	Unlikely	Ground contamination	Not significant
	• Air					
	• Groundwater					
Air Pollution Control						
Flue gas leak	• Air	Overpressure, material defect, corrosion/erosion	<ul style="list-style-type: none"> • Design and fabrication standards; • Inspection and maintenance program; • Controls and alarms for pressure; • Continuous emission monitors; and • Prompt shutdown of equipment. 	Very unlikely	Release of toxic combustion products to plant enclosures and potentially to atmosphere or via stack	Not significant
Leak/ spill of water treatment chemicals	• Groundwater	Storage container leak or transfer spill	<ul style="list-style-type: none"> • Training in unloading practices • Design standards • Impervious surfaces 	Very unlikely	Potential for contamination of groundwater	Not significant
Power Generation System						
Leak of ion exchange regeneration chemicals (NaOH, HCl)	<ul style="list-style-type: none"> • Air • Soil • Groundwater • Surface Water 	Storage container leak or transfer spill	<ul style="list-style-type: none"> • Bunded storage vessels; • Routine inspection and maintenance program; • Minimum of flanged connections; • Tanks fitted with high level alarms; 	Very unlikely	Potential contamination of soil, groundwater and surface water, and release of HCl fumes	Not significant

			<ul style="list-style-type: none"> • Design standards; • Impervious operational areas indoors; • Localized catchment volume; • Training in unloading practices; • Size of deliveries to reduce number of deliveries/unloading operations. 				Not significant
Vibration from out of balance rotating machinery or mechanical failure	Installation	Transmitted Vibration	<ul style="list-style-type: none"> • Alarm and shutdown systems; • Anti-vibration mountings; • Routine operator checks. 	Very unlikely	Transmitted vibration		Slight -
Turbine equipment failure	Equipment	Material defects, corrosion/erosion, fabrication defect or vibration	<ul style="list-style-type: none"> • Specification of equipment; • Implementation of correct codes of practice; • Inspection and maintenance program; • Vibration sensors, isolation valves, emergency shutdown valves • Fire detection and fire protection systems • Equipment within concrete structure • Emergency Plan 	Unlikely	Disintegration of the turbine, causing further adverse consequences through damage elsewhere in the power plant		Slight - Moderate
Fire from ignition of lube oil leak	Air	Oil leak plus ignition source	<ul style="list-style-type: none"> • Use of fire-proof lube oil • Oil collector installed • Minimum of flanged connections • Design standards • Routine operator checks • Fire detection and fire protection systems • Response procedure 	Very unlikely	Smoke, toxic combustion products		Slight - Moderate

Leak of lube oil/ seal oil from steam turbine equipment	Soil Groundwater Surface Water	Equipment fracture or vibration	<ul style="list-style-type: none"> • Minimum of flanged connections • Design standards • Routine operator checks • Routine inspection and maintenance Program. • Impervious surfaces indoors • Effluent drains isolate the area 	Unlikely	Potential fire and groundwater contamination	Not significant
Steam leak to plant building/ atmosphere	Noise Visual	Faulty boiler tubes and connections	<ul style="list-style-type: none"> • Statutory design, fabrication and inspection standards for steam systems • Minimum of flanged connections • Controls and alarms for pressure • Routine operator checks 	Unlikely	Noise and visible plume at leak	Not significant
Furnace/Boiler						
Fire from ignition of gas leak	Air Plant	Ignition of gas leak	<ul style="list-style-type: none"> • Burded storage tanks • Minimum of flanged connections • Design standards • Impervious operational areas • Routine operator checks • Limited sources of ignition • Firefighting systems • Response procedure 	Very unlikely	Smoke, toxic combustion products released to plant building, potentially to atmosphere; potential of consequential events	Slight Moderate -
Leak of diesel for starter	Soil Groundwater	Spill during delivery; leak due	<ul style="list-style-type: none"> • Secondary containment for delivery and 	Very unlikely	Potential soil, groundwater and	Not significant

burner	Surface Water	to faulty storage tank, burners or pipework connections	<ul style="list-style-type: none"> storage Routine inspection and maintenance program Minimum of flanged connections Design standards Impervious surfaces indoors Discharge point for attenuation ponds will be kept locked shut. 		surface water contamination		
Pressure surge/explosion in combustion system	Air Plant	Delayed ignition of support fuel; presence of flammable material; gas explosion	<ul style="list-style-type: none"> Combustion control system with interlocks. Boiler design standard Operator training. Crane operator observation of gas bottles and back loading of rejected feedstock 	Very unlikely	Flue gas emissions above limits and/or release of flue gases from plant if structure damaged	Slight Moderate -	
Back flow of combustion gases up feed chute	Air	Waste ignition in chute	<ul style="list-style-type: none"> suction created by ID fan or suction effect of stack if ID fan stopped "plug" of waste in chute acting as seal level detection/alarm in chute extraction of tipping hall atmosphere by combustion fan 	Very unlikely	Combustion products released to tipping hall and potentially into atmosphere	Not significant	
Miscellaneous							
Leak of fuel oil/diesel for vehicle refueling	Soil Groundwater	Spill during delivery or refueling, or leaks	<ul style="list-style-type: none"> Secondary containment for delivery and storage 	Very unlikely	Potential soil, groundwater and	Not significant	

	Surface Water		<ul style="list-style-type: none"> • Routine inspection and maintenance Program. • Storage Tank fitted with high level and leak alarms • Minimum of flanged connections • Design standards • Impervious surfaces outdoors • Oil water interceptors on drainage system 		surface water contamination	
Fire in stores containing flammable materials such as paints and solvent	Air Soil Surface water Ground water	Emission of toxic combustion products	<ul style="list-style-type: none"> • Fire precautions • Notices and training regarding fire hazards • Training regarding fire hazards • Fire hose nearby • Only store relatively small amounts of materials • Enforce no smoking rules • Permit-to-work system • Have a fire detection system and an emergency plan. 	Very unlikely	Major fire with emission of toxic combustion products and subsequent contamination of air, soil, surface water or groundwater; also potential for release of contaminated firewater	Not significant
Spillage of raw materials	Soil Surface water Ground water	Leakage from containers in storage or spillage during use	<ul style="list-style-type: none"> • Store only small quantities of materials • Bunded area for tanks • Designated storage areas • Storage in accordance with requirements of the control of hazardous substances • Use of spill kits • Design and fabrication standards 	Unlikely	Contamination of soil, surface water/groundwater	Not significant
Equipment/part item fire	Air	Faulty electric motor, cabling	<ul style="list-style-type: none"> • Design and fabrication standards 	Very unlikely	Smoke, combusted products potentially	Not significant

			<ul style="list-style-type: none"> • Inspection and maintenance program. • Routine operator inspection • Fire detection systems and fire hoses • Response procedure 		released into the atmosphere	
Firewater contamination	Air Surface Water Ground Water	Ineffective firewater containment	<ul style="list-style-type: none"> • Containment within plant area with impervious surfaces • Containment in bunker • Drainage arrangements to waste water tank. 	Very unlikely	Potential contamination of controlled water by run off through uncontaminated surface water system; potential for contamination of groundwater	Not significant

Annex 6. Mine Status of Project Site

Unofficial Translation of the Letter

Date: November 05, 2018
Afghanistan National Disaster Management Authority
Directorate of Mine Action Coordination (DMAC)

To Bayat Power Company

According to the maps and coordinates sent by the Afghan Bayat Power Company, the Project site is located in Khuja Gorger village in Sheberghan city, Jowzjan province. We have not either the surveyed and nor registered in our program database the potential mining areas in the 5 km radius of the Project site so far. Some areas of the jowzjan province has already been cleared of the mines in the last years.

Since Sheberghan city also suffered during the wars during the past years, it is advised that all construction companies, prior to planning stage, clean the areas of mines through one of the registered companies with us.

Please don't hesitate to contact us at 0708606060 if you observe or come across any suspicious objects.

Regards,



اداره ملی آماده گی مبارزه با حوادث
Afghanistan National Disaster Management Authority
ریاست انسجام و هماهنگی تطهیر ماین
Directorate of Mine Action Coordination (DMAC)

تاریخ | Date: ۱۳۹۷/۸/۱۴

شماره ثبت | REF: ۲۰۱۸-۶۷

به شرکت محترم بیات پاور |

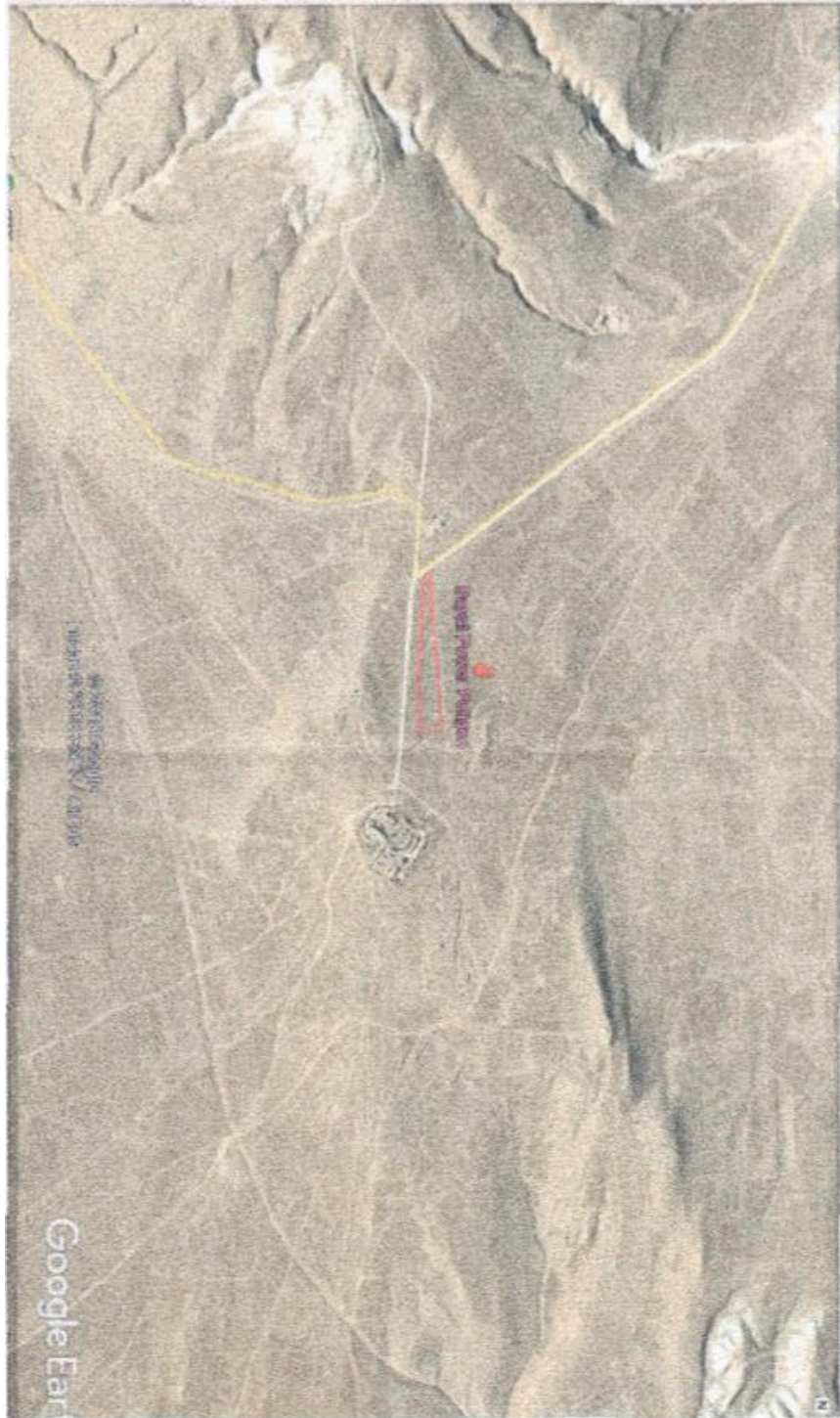
به اسناد مکتوب شماره (۱۶/۸۷ الی ۵۹/۱۳۰ مورخ ۱۳۹۷/۸/۵) ریاست محترم خدمات تکنیکی و سکتوری ولایت جوزجان و مکتوب شماره ۱۴/۱۲ مورخ ۱۳۹۷/۸/۲ و درخواست تیم سروی شرکت بیات پاور نگاشته میشود:

قرار ملاحظه نقشه و کوردینات ارسالی شرکت محترم بیات پاور ساحه مورد نظر در مربوطات قریه خواجه گوگردک، شبرغان مرکز ولایت جوزجان موقعیت دارد. در ساحه متذکره و محدوده پنج کیلومتری اطراف آن فعلاً ساحه ملوث با ماین و مواد منفجر نشده باقیمانده از جنگ شناسایی، سروی و ثبت بانک اطلاعاتی پروگرام ماین پلکی نشده است. بعضی از قسمت های نواحی مرکز ولایت جوزجان طی سالهای قبل توسط پروگرام ماین پاکی افغانستان سروی و از وجود ماین ها و مواد منفجر نشده پاکسازی گردیده است.

ازینکه شهر شبرغان، نواحی اطراف آن، و در مجموع ولایت جوزجان طی سالهای متمادی شاهد جنگ و نزاع های داخلی و خارجی بوده است، در صورت اعمار تاسیسات و کلد نکاری زمین توسط دست و پا سائین توصیه میگردد تا عوم شرکت های ساختمانی قبل از پلانگذاری ساحه را توسط یکی از موسسات راجستر شده ماین پاکی چک نمایند.

و همچنان احترامات خواهش میگردد تا در موقع مواجه شدن با اشیا مشکوک ساحه را مسدود نموده و این اداره را از طریق ۰۷۰۸۶۰۴۰۴۰ در جریان بگذارید.

بالحترام
محمد ابراهیم ستانکزی
مسول دفتر ساحوی زون شمال





Annex 7. Yatimtaq Gas Laboratory Report

Inspectorate International Limited
 P O Box 49 400,
 Hot No. TP 010 407,
 Technopark, Jebel Ali, Dubai,
 United Arab Emirates
 T: +97 1 4 899 8100
 F: +971 4 8807953
 www.inspectorate.com



LABORATORY REPORT

REPORT NO:- IDL-1008-2018-R0

Sample No.	: IDL/1008/2018	Customer Name	: BAYAT POWER
Lab Job No.	: DXB-TBA	Customer Address	: BAYAT POWER, AFGANISTAN
INSP No.	: NA	Sampling Date / Time	: 13.02.2018 / 03:15 PM
Product Grade	: NATURAL GAS	Sample Received on	: 07.03.2018
Gas Temperature	: 73°F	Analysis Conducted on	: 07-13.03.2018
Source	: Out Let	Reporting Date	: 14.03.2018
Sample Condition	: Good	Sampled By	: Client
Pressure	: 61 BAR-860 pSi	Terminal	: NA
Sample Reference	: Amine Plant Outlet Gas.		

TEST	METHOD	UNITS	RESULTS
Methane	ASTM D1945	% mol.	98.73
Ethane	ASTM D1945	% mol.	0.47
Propane	ASTM D1945	% mol.	0.05
Iso-Butane	ASTM D1945	% mol.	0.01
n-Butane	ASTM D1945	% mol.	0.01
Neo-Pentane	ASTM D1945	% mol.	<0.01
Iso-Pentane	ASTM D1945	% mol.	<0.01
n-Pentane	ASTM D1945	% mol.	<0.01
Hexane (C6)	ASTM D1945	% mol.	<0.01
Heptane (C7)	ASTM D1945	% mol.	<0.01
Octane (C8)	ASTM D1945	% mol.	<0.01
Nonane (C9)	ASTM D1945	% mol.	<0.01
Decane (C10)	ASTM D1945	% mol.	<0.01
Nitrogen	ASTM D1945	% mol.	0.24
Carbon Dioxide	ASTM D1945	% mol.	0.49
Hydrogen	ASTM D1945	% mol.	<0.01
Carbon Monoxide	ASTM D1945	% mol.	<0.01
Oxygen	ASTM D1945	% mol.	<0.01
Hydrogen Sulphide	ASTM D1945	% mol.	<0.01
Total Sulphur	ASTM D6228	ppm mol.	>14 *
Mercaptan Sulphur	ASTM D6228	ppm mol.	>14 *

Page 1 of 2

NOTE: Precision parameters apply in determination of above results and test method. Also refer to ASTM D 3244 & IP Standard methods Ap.E utilization of test data to determine conformance with specification. The derived test results are only applicable to the samples(s) as received and identified as above. The report shall not be reproduced except in full without the written approval of inspectorate Dubai. All our services are undertaken as per our standard terms and conditions of business, a copy can be provided upon request.

All services are rendered in accordance with Inspectorate's General Terms and Conditions of Business, available on request or at www.inspectorate.com/term_and_conditions/index.asp

Inspectorate International Limited
 P O Box 49400,
 Plot No. TP 010407,
 Technopark, Jebel Ali, Dubai,
 United Arab Emirates
 T +971 4 8998100
 F +971 4 8807953
 www.inspectorate.com



INSPECTORATE

LABORATORY REPORT

TEST	METHOD	UNITS	RESULTS
Relative Density @ 15/15°C, air=1	ASTM D3588	-	0.564
Gross Calorific Value	ASTM D3588	MJ/Sm ³	37.7
Net Calorific Value	ASTM D3588	MJ/Sm ³	33.9
Water Vapor Content of Gaseous Fuels	Karl Fischer	ppm wt	3
Particle Count	ISO 4406		
ISO Code		Code	6/5/1
Metals			
Iron	ICP-OES	mg/L	<1
Copper			<1
Lead			<1
Aluminum			<1
Tin			<1
Chromium			<1
Nickel			<1
Titanium			<1
Vanadium			<1
Silver			<1
Cadmium			<1
Manganese			<1
Calcium			<1
Magnesium			<1
Phosphorus			<1
Zinc			<1
Molybdenum			<1
Boron			<1
Barium			<1
Silicon			<1
Sodium	<1		
Potassium	<1		

Remarks: - Total Sulphur & Mercaptan Sulphur results are above the detection limit of the test method.
 (Obtained Sulphur Content in the analysis is 53 ppm md & Mercaptan Sulphur is 78 ppm mol)

Approved By 

George Idicula
 (Laboratory Manager)

Page 2 of 2

NOTE: Precision parameters apply in determination of above results and test method. Also refer to ASTM D 3244 & IP Standard methods. A/E utilization of test data to determine conformance with specification. The derived test results are only applicable to the samples(s) as received and identified as above. The report shall not be reproduced except in full without the written approval of Inspectorate Dubai. All our services are undertaken as per our standard terms and conditions of business, a copy can be provided upon request.

All services are rendered in accordance with Inspectorate's General Terms and Conditions of Business, available on request or at www.inspectorate.com/term_and_conditions/index.asp

Annex 8. Stakeholder Engagement Records

NO	Position	Name	Directorate	Contact Number
1	President	Sayed Milad Sajadi	Education	0790422006
2	Vice President	Sayed Aref Baqeri	Refugees and Repatriations	0744228718
3	Member	Sayed Jamaluddin	DABS	0784509486
4		Mohammad Yousuf	Municipality	0784509486
5		Borhanuddin	Urban Development and Housing	0794341274
6		Mohammad Rafie	Environment Protection	0782182938
7		Abdul Ghafar Ahmadi	Provincial Governor,	0788146610
8		Akhtar Mohammad Fayzi	Information & Culture	0799011966
9		Afizulla Qudrat	Provincial Council.	0788869080
10		Eng. Jawid	Mines and Petroleum	0781310033
11			Abdul Ghafar Kuyak	Bayat Power Company



تاریخ 1397/8/13

ساعت 12:00 PM

لیست اشتراک کنندگان کمیته سمع شکایات ریاست خانه ها:

شماره	نام و تخلص	وظیفه	ریاست مربوطه	امضاء
1	بزرگوار باقری	مدیر پذیرش	امور مهاجرین و مرددین	
2	محمدعلی	مدیر منابع	سازمان اشتراک	
3	سیدجمال الدین	مدیر مالی و انباری	چیزبان بین المللی	
4	سیدمهدی سجادی	عضو نظارت تعلیمی	ریاست معارف حوزه	
5	احسان البرین	انجمن نظارت و مراقبت	سفرسازی بین	
6	محمد صالح	مدیر ارزیابی و آمار	ریاست حفاظت محیط	
7	عبدالقادر احمدی	کارشناس آفکار	مقام دولتی	
8	احمد محمد "منقو"	آر.ام.ج.ریاست	ریاست اطلاعات و حقوق	
9	سعید محمد نوری	مدیر خدمات دولتی	ریاست شورای عالی	
10	انجیر جاوید	مدیر عمومی جولوریت	ریاست معادن	
11				
12				
13				
14				
15				

عبدالقادر گوئیگ رئیس مرکز بیات باور
 محمداسین مهدی یار رسول پروژه سروی
 اجتماع بیات باور

Local Grievance Redress Committees (Men Local GRCs)				
No	Position	Name	Father Name	Phone Number
1	President	Mohammad Alem	Abdul Karim	0787501536
2	Vice President	Saleh	Buman Ali	0747011720
3	Members	Haji Lal Mohammad	Abdul Khalil	0787923571
4		Mohammadullah	Ishagh	0767056470
5		Abdul Ghafar Kuyak	Abdul Khaleq	0702935333

Local Grievance Redress Committees (Women Local GRCs)				
No	Position	Name	Father Name	Phone Number
1	President	Andira	Mehrabuddin	0787862480
2	Vice President	Zia jan	Dad Mohammad	0731742261
3	Member	Zarmina	Abdulrahim	0731770768

جمهوری اسلامی افغانستان
ولایت جوزجان - شهر شورغان
پروژه برقی بیات

کمیته سمع شکایات

پروژه برقی بیات	نام پروژه
>	قریه / ناحیه
جوزجان	ولایت

در نشست امروز، مورخ ۱۳۹۷/۸/۱۵ هجری شمسی مطابق ۱۳۹۷/۸/۱۵ میلادی که در محل مرکز کواستدیاک، چابکستان با اشتراک تعدادی از نمایندگان، منتقدین و بزرگان محل تدویر گردیده بود روی تشکیل ایجاد کمیته اجتماعی سمع شکایات (GRC) بحث و گفتگو صورت گرفت که در نتیجه اشخاص ذیل به تأیید اکثر آرای مجلس، به عنوان نمایندگان مردم تعیین گردیدند:

- 1- محترم/محترمه ... محمد کمال ... ولد محمد کمال ... قریه/ناحیه صوفی جگه ... تلفن: ۰۷۸۶۳۰۱۹۳۶
- 2- محترم/محترمه ... صالح ... ولد ایمان علی ... قریه/ناحیه بندار اول ... تلفن: ۰۷۴۶۴۱۶۶۲۰
- 3- محترم/محترمه حاجی دلال محمد ... ولد محمد شکیل ... قریه/ناحیه صوفی قلعه ... تلفن: ۰۷۸۶۳۰۳۵۷۴
- 4- محترم/محترمه محمد رشاد ... ولد احسان ... قریه/ناحیه کوب حان ... تلفن: ۰۷۶۶۰۲۰۶۴۷۰
- 5- محترم/محترمه ایمان ... ولد محمد رحیم ... قریه/ناحیه بابا سعید ... تلفن: ۰۷۶۶۰۸۶۹۴۸۰
- 6- محترم/محترمه محمد کمال ... ولد محمد رحیم ... قریه/ناحیه صوفی جگه ... تلفن: ۰۷۳۱۷۴۲۲۶
- 7- محترم/محترمه زیر محمد ... ولد عبدالمصعب ... قریه/ناحیه نقینه ... تلفن: ۰۷۳۱۷۴۲۲۶
- 8- محترم/محترمه محمد کمال ... ولد بدرالرحمن ... قریه/ناحیه سوس ... تلفن: ۰۷۰۲۹۳۵۳۳۳

ما، اعضای کمیته اجتماعی فوق، مسئولیت داریم تا در تقای کار پروژه، در صورت بروز مشکلات اجتماعی و محیط زیستی، برای حل و فصل آن، اقدامات عندالوقوع را پیش گرفته و با مسئولین پروژه از طریق راه ارتباطی پروژه، محمد کمال با شماره تماس ۰۷۰۲۹۳۵۳۳۳ در ارتباط حاصل نماییم.

والتسلیع

محمد امین مددی بار رسول سروی اجتماعی
رئیس برقی بیات شورغان
۱۰/۸/۱۹۷

Civil Society FGD					
Date	Start time of interview	End of interview	Place of interview	Province	District
October 13, 2018	1:40PM	3:10PM	Information and culture Directorate	Jawzjan	1
NO	Name	Job Title	Gender	Age	Contact Number
1	Abdulmanan Farwand	Bakhtar Agency	Male	60	0799104147
2	Moh Rasul Danish	Manager at Radio Armaghan	Male	30	0780662940
3	Abdul Matin Sadid	Manager of PAFCO program	Male	29	0781880091
4	Haji Ali Entizar	Head of Civil Society Institutions	Male	40	0787535777
5	Sultan Hussian Sultani	Student	Male	25	0748590900
6	Akhtar Mohammad	Civilian Activist	Male	34	0799011966
7	Nooria	Manager at Male TV	Female	48	0787148801
8	Anjela Dadwar	University professor	Female	35	0799124887
9	Mahboba	Civilian Activist	Female	20	0783292363
10	Shakira	Government staff	Female	40	0786721162



University Students FGD					
Date	Start time of interview	End of interview	Place of interview	Province	District
24-10-2018	12:10 PM	1:00 PM	University of Jawzjan	Jawzjan	1
NO	Name	Job Title	Gender	Age	Contact Number
1	Habiba	University Students	Female	23	0786242318
2	Nooria	University Students	Female	21	0780362521
3	Farmela	University Students	Female	22	0789500443
4	Madina	University Students	Female	19	0785577294
5	Semin	University Students	Female	21	0788224027
6	Enayatullah	University Students	Male	21	0780525337
7	Nawabudin	University Students	Male	20	0787947091
8	Azizullah	University Students	Male	21	0795465155
9	Abdulbasir	University Students	Male	21	0782347011
10	Mohammadullah	University Students	Male	25	0767056470



Refugees and Repatriations FGD					
Date	Start time of interview	End of interview	Place of interview	Province	District
26-10-2018	3:00 pm	3:45 pm	Jawanar Rawshangar office	Jawzjan	3
NO	Name	Job Title	Gender	Age	Contact Number
1	Jamshed	Shopkeeper	male	24	0706498825
2	Shukrullaah	Worker	male	28	0786020300
3	Noor Mohammaad	Toiler	male	70	-
4	Faisal	Student	male	20	0780479094
5	Jabar	Student	male	21	0788679919
6	Amenah	House wife	female	28	0731767890
7	Latifa	House wife	female	45	0787208197
8	Asifa	House wife	female	100	-
9	Naz	House wife	female	24	-
10	Hora	House wife	female	63	-
11	Neda	House wife	female	32	-



University Professors FGD					
Date	Start time of interview	End of interview	Place of interview	Province	District
28-10-2018	12:00 pm	1:00 pm	University of Jawzjan	Jawzjan	1
No.	Name	Job Title	Gender	Age	Contact Number
1	Enayatullah Hamidi	University professor	Male	25	0781998535
2	Sayed Hesamudin	University professor	Male	27	0785105017
3	Hayratullah	University professor	Male	30	0782536503
4	Sayed Ahmad Khalid	University professor	Male	27	0782561543
5	Anjilah Dadwar	University professor	Female	35	0788844812
6	Omid Ahmad	University professor	Male	28	0788847422
7	Saifullah	University professor	Male	27	0788915589
8	Abdul Jabar Saqif	University professor	Male	28	0784381546
9	Hemasah Eftikhar	University professor	Female	39	0780320255
10	Khodidad Mahmodi	University professor	Male	30	0786052969
11	Mehdad Esmail	University professor	Male	32	0786250825
12	Abdulnasir Jawhar	University professor	Male	40	0785623685



Chiefs, Elders and Alley representative FGD					
Date	Start time of interview	End of interview	Place of interview	Province	District
30-10-2018	11:20am	12:10pm	The home of secretary head	Jawzjan	Sofi Qala village
No.	Name	Job Title	Gender	Age	Contact Number
1	Haji Lal Mohammad	Head of Naw Abad village	Male	50	0787923571
2	Mohammad Alim	Council Secretary	Male	35	0787501536
3	Mohaammad Nabi	Head of Sofi Qala village	Male	60	0783476229
4	Faqer Mohammad	Head of village	Male	78	-
5	Haji Najbudin	Local leader	Male	75	-
6	Mohammad Nazar	Head of Turkman Abad village	Male	41	0789750143
7	Jalaludin	Secretary of local Council	Male	38	0780309946
8	Khirmohammad	Head of Secretary	Male	54	0784765269
9	Sale Mohammad	Financial officer of the secretary	Male	48	0772465157
10	Abdullah	Head of people	Male	71	-
11	Haji Achil	Head of people	Male	63	0788767808
12	Haji Hamidullah	Head of Chehel mard village	Male	45	0780428624



House Wives FGD					
Date	Start time of interview	End of interview	Place of interview	Province	District
23-10-2018	3:00 PM	4:00 PM	Home of participate	Jawzjan	2- Mirwis menah
No.	Name	Job Title	Gender	Age	Contact Number
1	Zia jan	House wife	Female	25	0731742261
2	Sherin jan	House wife	Female	35	0711070290
3	Wida	House wife	Female	24	0786711370
4	Nazri	House wife	Female	38	-
5	Shamafroz	House wife	Female	32	0702700847
6	Shukria	House wife	Female	26	0730469064
7	Shakila	House wife	Female	35	-
8	Zainab	House wife	Female	27	-
9	Mawloda	House wife	Female	26	0729697936
10	Lema	House wife	Female	33	-



Employed Women FGD					
Date	Start time of interview	End of interview	Place of interview	Province	District
25-10-2018	7:00AM	7:50AM	Home of participate	Jawzjan	1
No.	Name	Job Title	Gender	Age	Contact Number
1	Mahdia	Baker	Female	35	0782365892
2	Shahnaz	Tailer	Female	19	0711070290
3	Terena	Doctor	Female	30	0799164949
4	Frishta	Tailer	Female	19	-
5	Zia jan	Radio speechify	Female	28	0731742261
6	Bi Bi Habiba	Needlework	Female	40	-
7	Marzia	Tailer and Needlework	Female	38	0786148328
8	Zia	Shearer	Female	18	-
9	Salma	Shearer	Female	18	0780440471





Religious Scholars FGD					
Date	Start time of interview	End of interview	Place of interview	Province	District
24-10-2018	10:05 AM	11:00 AM	Haj and Islamic affairs directorate	Jawzjan	1
No.	Name	Job Title	Gender	Age	Contact Number
1	Mohammad Alim	Orator of Hazrat Omar mosque	male	35	0784801149
2	Abduljabar	Imam of Hazrat Osman mosque	male	38	0783061264
3	Mawli Khir mohammaad	Imam of Imam Azam Mosque	male	38	0780115756
4	Khilfa Haji Azam	Orator of Khanqa mosque	male	45	0789016428
5	Saifudin	Orator of Houusin Abad village mosque	male	31	0780776074
6	Ahmad Khan	Imam of Narab shah mosque	male	35	0799123636
7	Abdulsamad	Orator of Imam Tarmzi mosque	male	49	0788743813
8	Mawlawi Abdullah	Imam of Hazrat Bilal mosque	male	41	0784876837
9	Karamatullah	Orator of Jawhari mosque	male	35	0782463727
10	Shahwali	Orator of Hazrat Hamza mosque	male	47	0788742231



General Public FGD					
Date	Start time of interview	End of interview	Place of interview	Province	District
31-10-2018	11:40AM	12:40 PM	Youth Empowerment Center	Jawzjan	1
NO	Name	Job Title	Gender	Age	Contact Number
1	Taqi Sherzad	Radio Sarish employee	male	22	0782075041
2	Hussin Rahimi	Member of social institution	male	23	0731494918
3	Mohammad Haroon	Radio Bustan employee	male	22	0781817101
4	Chargh Ali Behzad	Member of Balkhab student Institution	male	22	0772600907
5	Najibullah Ibrahim	Member of Ahlubit madrasah	male	21	0747520983
6	Mohammad Rahimi	Member of Hamagan Organization	male	23	0775663335
7	Moh Aqa Danish	Head of Samangan Student institution	male	21	0764509508
8	Azizullah Sultani Zada	Imam of Chaharda Masom mosque	male	27	0749423036
9	Saleh Noori	Member of cultural commute	male	24	0747011790
10	Nasiba Aria	Employee of PAFCO	female	22	0789114270
11	Masoma Saydi	Member of Durokhshan institution	female	21	0786380830
12	Asma Rashid	Member of Ahlubit madrasah	female	19	0796665053



Landowners & Farmers FGD					
Date	Starting time	Ending Time	Place of Interview	Province	District
26-10-2018	10:20am	11:00am	Home of Deputy council	Jawzjan	3- Hamid Abad village
No	Name	Job Title	Sex	Age	Contact Number
1	Ibrahim	Worker	male	60	0787880845
2	Juma Khan	Jobless	male	65	-
3	Haji Abdurahman	Head of village	male	48	0786285994
4	Agha Mohammad	Worker	male	52	0785035043
5	Rahman Nazar	Worker	male	59	0781884576
6	Saleh	Worker	male	42	-
7	Khalifa Juma	Farmer	male	40	0782927020
8	Ghayeb Nazar	Farmer	male	41	0786753728
9	Haji Sefudian	Farmer	male	52	0785548025
10	Khan Morad	Farmer	Male	51	0784092676
11	Abdulaziz	Farmer	Male	41	0787675039
12	Naqibullah	Head of landowners	male	21	0783827545

Ministry of Rural Rehabilitation and Development Directorate

Date: November 4, 2018
Interviewee: Engineer Mohammad Yousuf



Statistic Organization Office

Date: October 29, 2018
Interviewee: Abdul Matin



Afghanistan Land Authority Office

Date: October 29, 2018

Interviewee: Jamaludin Ranjbar



Ministry of Women's Affairs Directorate

Date: October 30, 2018

Interviewee: Waheeda Faizi



Ministry of Commerce Directorate

Date: October 30, 2018

Interviewee: Eng. Birdi Sorkhi



Ministry of Agriculture Irrigation and Livestock Directorate

Date: October 29, 2018

Interviewee: Eng. Abdurasheed



NGOs				
No.	Name	Name of Interviewee	Job Title	Date
1	World Hunger Help (WHH)	Nasrullah Seddiqi	Head of NGO	Nov 8, 2018
2	Women Association	Fatema Nik Rasul	Head of NGO	Nov 8, 2018
1:photo				
2:photo				

Jawzjan Province, Directorates				
No.	Directorate	Name of Interviewee	Job Title	Date
1	Ministry of Education	Abdulhay Yashin	Head of Directorate	Oct 29, 2018
2	Ministry of Refugees and Repatriations	Sayed Taleb Sadat	Acting Head of Directorate	Oct 24, 2018
3	Provincial Municipality	Mohabbatullah Talash	Director of Monitoring and Evaluation	Oct 29, 2018
4	DABS	Sayed Mansour Pouya	Head of Directorate	Oct 28, 2018
5	Ministry of Commerce & Industry	Alhaj Allhajullah Birdy Sorkhi	CEO of Chamber of Commerce & Industries	Oct 30, 2018
6	Ministry of Urban Development and Housing	Mohammad Amin Arkain	Head of Directorate	Oct 29, 2018
7	NEPA	Hazrat Shah	Head of Directorate	Oct 29, 2018
8	Land Registration and Coordination - (ARAZI)	Jamalluddin Ranjbar	Record of Results Manager	Oct 29, 2018
9	Ministry of Information & Culture	Akhtar Mohammad Faizi	General Manager of Youth Affairs	Oct 27, 2018
10	Provincial Council	Hafizullah Nudrat	Member of Provincial council	Oct 29, 2018
11	Ministry of Mine and Petroleum	Abdul Salam	General Director of Cadastre	Dec 7, 2018
12	Ministry of Women Affairs	Wahida Faiz	Head of Coordination of Social and Economic Services	Oct 30, 2018
13	Ministry of Public Health	Hafizullah Jamshidi	Head of Directorate	Oct 29, 2018
14	Statistics Organization	Abdul Mateen	Acting Head of Directorate	Oct 29, 2018
15	Ministry of Public Works	Ataullah Kargar	Head of Directorate	Oct 29, 2018
16	Ministry of Rural Rehabilitation and Development	Mohammad Yousof Saeed	Head of Directorate	Dec 4, 2018
17	Disaster Management	Sayed Feyzullah Sadat	Head of Directorate	Oct 30, 2018
18	Ministry of Labour Social Affairs Martyrs and Disabled	Sayed Abdurrashid Hozuri	Head of Directorate	Oct 31, 2018
19	Ministry of Agriculture, Irrigation and Livestock Directorate	Abdurrashid	Agricultural Research Manager	Oct 29, 2018

1	2
	
3	4
	
5	6
	
7	8
	

9		10	
			
11		12	
			
13		14	
			
15		16	



17



18



19



Annex 9. Sample of Individual Questionnaire



..... کود
..... تاریخ

سوالنامه انفرادی پروژه برق بیات ولایت جوزجان

بیوگرافی

1	اسم	
2	سن	
3	حالت مدنی	<input type="checkbox"/> مجرد <input type="checkbox"/> متاهل <input type="checkbox"/> بیوه
4	ولسوالی	
5	قریه/ناحیه	
6	وظیفه	
7	درآمد ماهیانه	
8	تحصیلات	<input type="checkbox"/> بی سواد <input type="checkbox"/> ابتدائیه <input type="checkbox"/> دوازده پاس <input type="checkbox"/> لیسانس <input type="checkbox"/> ماستر <input type="checkbox"/> تعلیمات دینی
9	مکان مصاحبه	
10	زمان مصاحبه	
11	شماره تماس (اختیاری)	

سوالات اجتماعی

1- آیا شما از پروژه برق گازی بیات آگاهی دارید؟
 بله خیر

2- آیا وضعیت فعلی برق، در شهر شما رضایت بخش است؟
 بله خیلی زیاد خیر خیلی کم

3- شما در بیست چهار ساعت، چند ساعت برق دارید؟
 1 - 10 ساعت 10 - 20 ساعت 24 ساعت نداریم

4- برق شما از کدام منابع تامین می شود؟
 برق شهری (جنراتور) برق شهری (وارداتی)
 برق سولر (آفتابی) برق آبی برق بادی دیگر

5- آیا شما از تطبیق این پروژه رضایت دارید؟
 بله خیلی زیاد خیر خیلی کم

6- این پروژه چه فایده‌ی برای شما دارد؟

.....
.....
 ندارد نمایانم

7- این پروژه چه ضرری برای شما خواهد داشت؟

.....
.....
 ندارد نمایانم

8- مردم این منطقه به کدام زبانها صحبت می‌کنند؟

فارسی/ دری پشتو ازبکی دیگر

9- منبع آب آشامیدنی در این منطقه کدام است؟

آب نل آب چاه آب چشمه دیگر

10- مردم این منطقه به کدام کارها مصروف هستند؟ (شغل مردم منطقه چیست؟)

دهقانی نجاری مستری موتورانی ویرینگیاری برقی نانوایی معلمی
 رنگمالی دکانداری قصابی و
.....

11- آیا فکر می‌کنید که این پروژه باعث اشتغال و ایجاد فرصت‌های کاری در منطقه و شهر شما می‌شود؟

بله خیر

12- بیماری‌های شایع در این شهر چه بیماری‌هایی می‌باشند؟

نفس‌تنگی محرقه فلج اطفال تیرکلوز اسهال سینه‌بغل سرطان دیگر
.....

13- آیا دختران و زنان این شهر می‌توانند بدون کدام مشکل درس‌هایشان را ادامه بدهند؟

بله خیر

14- کدام موانع باعث می‌شود که خانم‌ها نتوانند درس‌هایشان را ادامه بدهند؟

سنت‌ها خشونت‌های فامیلی مشکلات اقتصادی ازدواج زود هنگام نبودن مکتب یا استاد خانم
 دوری مکتب ناامنی دیگر

سوالات محیط زیستی

15- انواع نباتات موجود در منطقه را نام ببرید؟

انواع درختان

.....
انواع گیاهان خودرو و بیابانی

.....
گیاهان دارویی و طبی

.....
 ندارد نمیدانم

16- انواع حیوانات موجود در منطقه را نام ببرید؟

حیوانات خانگی

.....
حیوانات وحشی

.....
خزندگان

.....
پرندهگان

.....
 ندارد نمیدانم

17- منبع سوخت مردم این مناطق در فصل گرما چیست؟

زغال سنگ

چوب

گاز

برق

دیگر

18- منبع سوخت مردم این مناطق در فصل سرما چیست؟

زغال سنگ

چوب

گاز

برق

دیگر

19- در این مناطق، برای پخت و پز از چه نوع سوخت استفاده می شود؟

زغال سنگ

چوب

گاز

برق

دیگر

20- از کدام منابع آب، برای آبیاری زمین های زراعتی استفاده می شوند؟

آب نل آب چاه آب چشمه آب دریا دیگر

21- آیا منابع آب زراعتی این مناطق در فصل زراعت کافی می باشد؟
بله خیر

22- برای تطبیق بهتر این پروژه، شما چه پیشنهاداتی دارید؟

.....
.....
.....
.....

Social Questionnaires
 Bayat IPP Project
 October 2018

Question	Answer
Name of Enumerator	
Name of Field Supervisor	
Introduction	
Interviewer to introduce himself to the stakeholder and ask for permission to conduct the survey. Once they have agreed to partake, please state: "This interview is purely voluntary and you are under no obligation to provide information that you do not feel comfortable with. If you do not want to answer a question, please just state this. We appreciate your participation in the survey, and it will help us in understanding the current social and environmental aspects related to the project better with your assistance."	
Basic Information	
Place of Interview	
Date / Time of Interview	
District	
Village / Town	
Please provide me with your name and surname?	
Please provide me with your age?	
Please could you provide me with your telephone number?	
Please tell me what your marital status is?	Single <input type="checkbox"/> Married <input type="checkbox"/> Widow <input type="checkbox"/>
Please tell me what your occupation is?	
What level of education do you hold?	Illiterate <input type="checkbox"/> Primary <input type="checkbox"/> 12th Grade <input type="checkbox"/> Bachelor <input type="checkbox"/> Trade <input type="checkbox"/> Religious Education <input type="checkbox"/>

Social

Before this introduction, have you heard of the Bayat Gas to Power Plant project before? Ask if they want to elaborate on what they have heard about the Project.

- Yes
- No

Is the existing electricity satisfied in your town/city?

- Yes
- Very much
- No
- Very Low

In 24 hours, how many hours do you have electricity?

- 1-10 hours
- 10-20 hours
- 24 hours
- We don't have

Where do you source your energy from?

- Grid power
- Generator
- Solar
- Wind
- Hydroelectric
- Other

Do you agree with implementation of this project?

- Yes
- Very much
- No
- A little

What is the beneficial of this project?

-
 Doesn't have
-
 I don't know

<p>What is the adverse impacts of this project?</p> <p>.....</p> <p>.....</p> <ul style="list-style-type: none"> - <input type="checkbox"/> Doesn't have - <input type="checkbox"/> I don't know
<p>Which languages are spoken in your community?</p> <ul style="list-style-type: none"> - <input type="checkbox"/> Persian/Dari - <input type="checkbox"/> Pashto - <input type="checkbox"/> Uzbek - <input type="checkbox"/> Other
<p>From where do you provide your drinking water?</p> <ul style="list-style-type: none"> - <input type="checkbox"/> Piped Water - <input type="checkbox"/> Water Well - <input type="checkbox"/> Fountain - <input type="checkbox"/> Stream - <input type="checkbox"/> Other
<p>What are the most common jobs in your community?</p>
<p>Does the implementation of the project will create job opportunities in your community?</p> <ul style="list-style-type: none"> - <input type="checkbox"/> Yes - <input type="checkbox"/> No
<p>What illnesses have you observed in the community?</p> <ul style="list-style-type: none"> - <input type="checkbox"/> Asthma - <input type="checkbox"/> Paralysis - <input type="checkbox"/> Typhus - <input type="checkbox"/> "Hectic" - <input type="checkbox"/> Diarrhoea - <input type="checkbox"/> Cancer - <input type="checkbox"/> Others?
<p>Are the girls and women studies continuously in your community?</p> <ul style="list-style-type: none"> - <input type="checkbox"/> Yes - <input type="checkbox"/> No
<p>What are the most problem that female cannot studies continuously in your community?</p> <ul style="list-style-type: none"> - <input type="checkbox"/> Tradition - <input type="checkbox"/> Family violence - <input type="checkbox"/> Economic problems

- Marriage
- Lack of school and female teachers
- Insecurity
- Others

Environment in General

What kinds of flora are in the natural areas around us?

- Trees:.....
- Territorial vegetation:
- Medicinal plants:
- Not existed
- I don't know

What kinds of fauna are in the natural areas around us?

- Domestic Animal:
- Wild Animal:
- Reptile:
- Birds:
- Not existed
- I don't know

What cooking fuel do the people usually use in summer time?

- Coal
- Wood
- Gas
- Electricity
- Other

What cooking fuel do the people usually use in winter time?

- Coal
- Wood
- Gas
- Electricity
- Other

What are your current source of water for irrigation?

- Pipe water
- Well
- Spring
- River
- Other

Is the water enough for irrigation?

- Yes
- No

Do you have any questions or comments regarding the implementation of the project?

.....

Thank you very much for your time

.....

Annex 10. Sample of FGD Questionnaire



پرسشنامه مصاحبه گروهی

شهر شبرغان
پروژه بیات پاور

پرسشنامه مصاحبه گروهی

شهر شبرغان

این پرسشنامه جهت سروی در مورد اثرات زیست محیطی و اجتماعی پروژه بیات پاور شبرغان (Bayat Power IPP) می باشد.

"نوت برای گرداننده مصاحبه گروهی"

گرداننده گرامی:

بر اساس اصول مصاحبه گروهی قرار نیست موضوعات بحث به صورت جزء وار و نکته به نکته در رهنمای مصاحبه گنجانده شود. تنها مواردی که در رهنما ذکر میگردد موضوعات کلی مورد بحث می باشد. در حین اجرای مصاحبه گروهی از شما اکیدا درخواست میگردد تا هر موضوع را بعد از معرفی کلی، به طور موşkافانه و بر اساس موارد ذیل تفحص و پرس و پال نموده تا اطلاعات مکمل و بدون نقص را از مصاحبه شوندهگان بدست آورید.

لذا از شما خواهشمندیم بعد از معرفی پروژه، برای تفحص و موşkافی در حین سوال و جواب از روش های مستقیم و غیر مستقیم که نمونه آن در ذیل تشریح گردیده اند استفاده نمایند.

نوع اول: به شکل مستقیم:

- ✓ منظور شما از این حرف چیست؟ لطفا بیشتر توضیح دهید
- ✓ خوب شما در این مورد چی فکر میکنید؟
- ✓ این مورد را که گفتید چگونه اتفاق افتاد؟
- ✓ قضاوت و احساس شما نسبت به این مورد چگونه است؟
- ✓ می توانید در این مورد کمی بیشتر بگویید؟
- ✓ چیزی را که شما یادآوری کردید، من زیاد نفهمیدم، میشود به زبان ساده تر و با ذکر مثال بیان نمایید؟

نوع دوم: به شکل غیر مستقیم:

- ✓ واکنش طبیعی به جوابات ارائه شده، مثل درسته، دقیقا، اها و غیره
- ✓ جاری کردن بعضی از کلمات و عبارات که ممکن حین صحبت در ذهن گوینده نیابند.
- ✓ و غیره تکنیک های معمول....

لیست اشتراک کنندگان

شماره	نام	شغل/وظیفه	جنس	سن	شماره تماس	امضا/شصت
1						
2						
3						
4						
5						
6						
7						
8						
9						
10						
11						
12						

نام مصاحبه کننده:

امضا:

پرسشنامه مصاحبه گروهی، ولایت جوزجان، پروژه بیات پاور					
تاریخ	وقت شروع مصاحبه	وقت ختم مصاحبه	محل مصاحبه	شهر	ولسوالی/ ناحیه / قریه
				شبرغان	
شماره	دستور جلسه/ نکات اصلی بحث				
1	آیا شما از پروژه نیروگاه برق گازی بیات آگاهی دارید؟				
2	وضعیت فعلی برق در منطقه تان چگونه است ؟				
3	برق فعلی منطقه شما از کدام منبع تامین می شود؟				
4	لطفاً فواید این پروژه را در سطح ولایت و منطقه تان ذکر نمایید.				
5	آیا شما فکر می کنید که اجرای این پروژه کدام ضرری برای شما و منطقه تان داشته باشد؟				
6	به نظر شما بیشترین سود و فایده این پروژه به چه کسانی می رسد؟				
7	به نظر شما کدام چالش ها می تواند در آینده این پروژه را با مشکل مواجه نماید؟				
8	به نظر شما، اجرای این پروژه چه مشکلات محیط زیستی به بار خواهد آورد؟				
9	برای تطبیق بهتر این پروژه چه پیشنهادی دارید؟ لطفاً توضیح دهید.				

Group interview questionnaire

This questionnaire is intended survey of environmental and social impact assessment of Bayat Power energy in Sheberghan , Afghanistan.

Note to Group interviewer directors:

Based on group interview rules, it is not supposed to enter to detailed and point by point of subjects in interview manual. Interviewers should present enough and comprehensive information to attendees and get feedback by emphasis to direct and indirect interview methods.

So you are requested to use direct and indirect methods -as below sample- after project introduction:

Type 1) Direct Method:

What is your mean? Please explain more

What you think about this?

How this your cited matter may happen?

What is you opinions and feeling about this matter?

Can you please clear more this one?

I couldn't understand you, can you please give me a sample or simple?

Type 2) In-Direct Method:

Proper reaction to responses (yeah, right, true, well,...)

Help attendees to find proper words and expressions to describe their own idea

Group interview questionnaire, Bayat Power project, Jawzjan province					
Date	Interview start time	Interview end time	Place of interview	city	District
No	Subjects to Discuss				
1	Do you know about Bayat Power project?				
2	How is current status of electricity in your area?				
3	What is your electricity source?				
4	What is this project points and advantages to your area/ district or province ?				
5	Do you think this project has disadvantages to you and your area? How (if yes)?				
6	Who are most beneficiary people/ group in this project?				
7	What is most challengeable matters to this project which may make problem?				
8	What is your idea about environmental issues may raise by this project in future?				
9	What is your suggestions to make improvement to this project implementation?				

Attendees list

No	Name	Job/business	Gender	Age	Contact #	Sign
1						
2						
3						
4						

Interviewer name and sign :

Annex 11. Labour Influx Management

Plan Employment Impacts

The total workforce employed during the construction has been estimated at 60 people. This includes unskilled and skilled labor, technicians and employees. For the operation of the new power plant and associated facilities about 36 permanent employees will have to be recruited. Employing construction workers and other staff from the region will offer an opportunity to create local employment, increase the local skill base and provide a boost to the local economy. Local communities in the region have requested to provide employment preferences to those already living near the project. They have high expectations of the employment opportunities generated by the project. Moreover, they expect an important in-migration of people from the region, the creation of new business opportunities and other economic benefits. In an area with a relatively high percentage of unemployment, the project will certainly attract a number of job seekers and followers. However, the number of new business opportunities will be limited since the project area is a restricted area, which is only accessible for employees of Contractor and related services.

In order not to advocate too high expectations which could lead to social unrest, it is important that the project provides adequate and realistic information on the opportunities the project would offer. This could be done through regular updates in the local newspapers and other media. For a number of jobs, qualified people from other regions of Afghanistan will have to be attracted. Locally affected people including women should be encouraged to take up construction employment. Women can be organized in female working groups to undertake discrete construction tasks, tree planting, health services, and other supporting services.

Mitigation Measures:

The project could benefit the local population by hiring qualified local workers for construction jobs. The following principles and requirements will be required of the Contractors to follow in their hiring for construction forces:

- Preference will be given to the local population from Sheberghan city and the suburbs who meet the eligibility for the jobs for construction;

- Recruitment process should be made public, with information on timing, recruitment agency or persons, place, and procedures;
- Publication of the above info should be done at least one month prior to recruitment commencing for any phase; information should be provided on how many jobs are available, the likely remuneration package, and the likely duration of the contracts of employment offered;
- Necessary vocational training will be provided to local people to develop their skills base to benefit from the employment opportunities under the project. This could take a number of forms beginning with sessions in local schools and/or a partnership with the local engineering college.

Labor Influx

The influx of a construction force may easily lead to social conflicts with the local population. Workers also might misbehave or get involved in illegal practices, e.g. poaching or hunting. In order to contribute to a harmonious relationship with local communities, to reduce behaviors that could lead to social conflict, and to prevent further environmental degradation a Code of Conduct was also developed for the labor force.

Project construction activities to be carried out near the local communities may cause disturbance and possible conflicts between the workforce and the local population.

- Due to increased use of trucks and other vehicles on the roads in the project area on the access roads to the urban areas elderly people, women and children will be more exposed to dangerous situations;
- The influx and accommodation of workforces will result in increased concerns for the safety of women and children. The mobility of women might be reduced;
- Workers coming from different parts of Afghanistan may have different norms and values in social behavior as compared with the resident population. In addition, migrant labor force could disturb the privacy of the local population.

Miscommunications between these two groups could easily lead to social unrest;

- To avoid the social unrest, the contractor will be provided lunch or other food during working hours
- There could be a shortage of supplies in local markets and shops due to the temporary presence of workforces. This could be a hindrance for the local population, especially for elderly people.
- Local population will have priority about unskilled labor, in order to avoid social unrest.

Mitigation Measures:

The Code of Conduct recognizes the provision of resources by the employer and shares responsibilities among the workers for the use of equipment, procedures, and training. Typical issues to be included in a Code of Conduct are the following:

- No hunting, poaching or illicit use of local natural resources;
- Careful use of local natural resources and project resources, especially water; transmission line materials, fuel, fuel-wood, and electricity;
- Restrictions related to the consumption of alcohol and drugs;
- Safe driving practices; and
- Respect for the local community and its cultural norms in which laborers are working.